

Piccolo

# OkMEA Scale Sets

## Set 1

A Major



Musical notation for the A Major scale, Set 1, Piccolo. The scale is written in treble clef with a key signature of two sharps (F# and C#). The notation shows the ascending and descending scales with a final quarter rest.

Db Major



Musical notation for the Db Major scale, Set 1, Piccolo. The scale is written in treble clef with a key signature of five flats (Bb, Eb, Ab, Db, and Gb). The notation shows the ascending and descending scales with a final quarter rest.

Bb Chromatic



Musical notation for the Bb Chromatic scale, Set 1, Piccolo. The scale is written in treble clef with a key signature of two flats (Bb and Eb). The notation shows the ascending and descending chromatic scales with a final quarter rest.



Musical notation for the Bb Chromatic scale, Set 1, Piccolo (continued). This block shows the final part of the chromatic scale, including the final quarter rest.

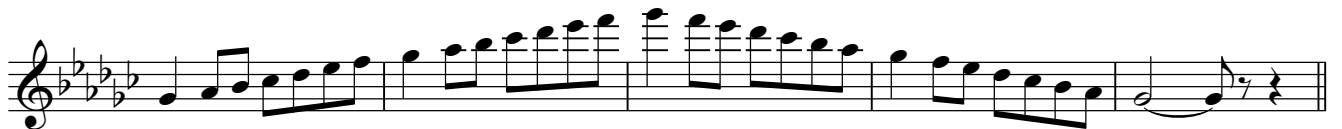
## Set 2

D Major



Musical notation for the D Major scale, Set 2, Piccolo. The scale is written in treble clef with a key signature of two sharps (F# and C#). The notation shows the ascending and descending scales with a final quarter rest.

Gb Major



Musical notation for the Gb Major scale, Set 2, Piccolo. The scale is written in treble clef with a key signature of six flats (Bb, Eb, Ab, Db, Gb, and Cb). The notation shows the ascending and descending scales with a final quarter rest.

Bb Chromatic



Musical notation for the Bb Chromatic scale, Set 2, Piccolo. The scale is written in treble clef with a key signature of two flats (Bb and Eb). The notation shows the ascending and descending chromatic scales with a final quarter rest.



Musical notation for the Bb Chromatic scale, Set 2, Piccolo (continued). This block shows the final part of the chromatic scale, including the final quarter rest.

Piccolo

Set 3

G Major



B Major



Bb Chromatic



Set 4

C Major



E Major



Bb Chromatic



Flute

# OkMEA Scale Sets

## Set 1

A Major



Musical notation for the A Major scale, Set 1. The scale is written in treble clef with a key signature of two sharps (F# and C#). It consists of an ascending and a descending line of notes, ending with a double bar line.

Db Major



Musical notation for the Db Major scale, Set 1. The scale is written in treble clef with a key signature of five flats (Bb, Eb, Ab, Db, and Gb). It consists of an ascending and a descending line of notes, ending with a double bar line.

C Chromatic



Musical notation for the C Chromatic scale, Set 1. The scale is written in treble clef and consists of a continuous sequence of half notes, ascending and then descending, ending with a double bar line.



Musical notation for the C Chromatic scale, Set 1 (continued). This section shows the final part of the chromatic scale, including the final descending notes and the double bar line.

## Set 2

D Major



Musical notation for the D Major scale, Set 2. The scale is written in treble clef with a key signature of two sharps (F# and C#). It consists of an ascending and a descending line of notes, ending with a double bar line.

Gb Major



Musical notation for the Gb Major scale, Set 2. The scale is written in treble clef with a key signature of five flats (Bb, Eb, Ab, Db, and Gb). It consists of an ascending and a descending line of notes, ending with a double bar line.

C Chromatic



Musical notation for the C Chromatic scale, Set 2. The scale is written in treble clef and consists of a continuous sequence of half notes, ascending and then descending, ending with a double bar line.



Musical notation for the C Chromatic scale, Set 2 (continued). This section shows the final part of the chromatic scale, including the final descending notes and the double bar line.

Set 3

G Major



B Major



C Chromatic



Set 4

C Major



E Major



C Chromatic



Oboe

# OkMEA Scale Sets

## Set 1

A Major



Db Major



C Chromatic



## Set 2

D Major



Gb Major



C Chromatic



Set 3

G Major



B Major



C Chromatic



Set 4

C Major



E Major



C Chromatic



Bassoon

# OkMEA Scale Sets

## Set 1

A Major



Db Major



F Chromatic

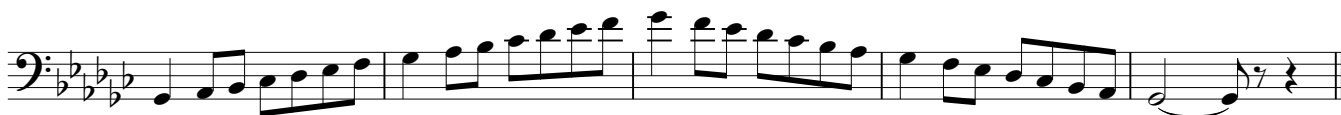


## Set 2

D Major



Gb Major



F Chromatic



Set 3

G Major

Musical staff for G Major in bass clef. The key signature has one sharp (F#). The melody consists of eighth and sixteenth notes, starting on G2 and ending on G3 with a fermata.

B Major

Musical staff for B Major in bass clef. The key signature has two sharps (F# and C#). The melody consists of eighth and sixteenth notes, starting on B2 and ending on B3 with a fermata.

F Chromatic

Musical staff for F Chromatic in bass clef. The key signature has no sharps or flats. The melody is a chromatic scale from F2 to F3, consisting of eighth and sixteenth notes.

Musical staff for F Chromatic in bass clef. The key signature has no sharps or flats. The melody is a chromatic scale from F3 down to F2, consisting of eighth and sixteenth notes.

Set 4

C Major

Musical staff for C Major in bass clef. The key signature has no sharps or flats. The melody consists of eighth and sixteenth notes, starting on C2 and ending on C3 with a fermata.

E Major

Musical staff for E Major in bass clef. The key signature has four sharps (F#, C#, G#, and D#). The melody consists of eighth and sixteenth notes, starting on E2 and ending on E3 with a fermata.

F Chromatic

Musical staff for F Chromatic in bass clef. The key signature has no sharps or flats. The melody is a chromatic scale from F2 to F3, consisting of eighth and sixteenth notes.

Musical staff for F Chromatic in bass clef. The key signature has no sharps or flats. The melody is a chromatic scale from F3 down to F2, consisting of eighth and sixteenth notes.



E♭ Clarinet

# OkMEA Scale Sets

## Set 1

F# Major



Musical notation for the F# Major scale, starting on C4. The scale is written in treble clef with a key signature of three sharps (F#, C#, G#). The notes are: C4, C#4, D4, D#4, E4, E#4, F#4, F#4, G4, G#4, A4, A#4, B4, B#4, C5.

B♭ Major



Musical notation for the B♭ Major scale, starting on C4. The scale is written in treble clef with a key signature of two flats (B♭, E♭). The notes are: C4, C4, D4, D4, E4, E4, F4, F4, G4, G4, A4, A4, B4, B4, C5.

F Chromatic



Musical notation for the F Chromatic scale, starting on C4. The scale is written in treble clef. The notes are: C4, C#4, C4, C#4, D4, D#4, D4, D#4, E4, E#4, E4, E#4, F#4, F#4, G4, G#4, G4, G#4, A4, A#4, A4, A#4, B4, B#4, B4, B#4, C5.



Musical notation for the descending F Chromatic scale, starting on C5. The notes are: C5, B#4, B4, B#4, A#4, A4, A#4, G#4, G4, G#4, F#4, F#4, E#4, E4, E#4, D#4, D4, D#4, C#4, C4, C#4, C4.

## Set 2

B Major



Musical notation for the B Major scale, starting on C4. The scale is written in treble clef with a key signature of two sharps (F#, C#). The notes are: C4, C#4, D4, D#4, E4, E#4, F#4, F#4, G4, G#4, A4, A#4, B4, B#4, C5.

E♭ Major



Musical notation for the E♭ Major scale, starting on C4. The scale is written in treble clef with a key signature of three flats (B♭, E♭, A♭). The notes are: C4, C4, D4, D4, E4, E4, F4, F4, G4, G4, A4, A4, B4, B4, C5.

F Chromatic



Musical notation for the F Chromatic scale, starting on C4. The scale is written in treble clef. The notes are: C4, C#4, C4, C#4, D4, D#4, D4, D#4, E4, E#4, E4, E#4, F#4, F#4, G4, G#4, G4, G#4, A4, A#4, A4, A#4, B4, B#4, B4, B#4, C5.



Musical notation for the descending F Chromatic scale, starting on C5. The notes are: C5, B#4, B4, B#4, A#4, A4, A#4, G#4, G4, G#4, F#4, F#4, E#4, E4, E#4, D#4, D4, D#4, C#4, C4, C#4, C4.

Set 3

E Major



Musical staff for E Major, showing a sequence of notes in treble clef with a key signature of three sharps (F#, C#, G#).

A♭ Major



Musical staff for A♭ Major, showing a sequence of notes in treble clef with a key signature of four flats (B♭, E♭, A♭, D♭).

F Chromatic



Musical staff for F Chromatic, showing a sequence of notes in treble clef with a key signature of one flat (B♭).



Musical staff for F Chromatic continuation, showing a sequence of notes in treble clef with a key signature of one flat (B♭).

Set 4

A Major



Musical staff for A Major, showing a sequence of notes in treble clef with a key signature of three sharps (F#, C#, G#).

D♭ Major



Musical staff for D♭ Major, showing a sequence of notes in treble clef with a key signature of four flats (B♭, E♭, A♭, D♭).

F Chromatic



Musical staff for F Chromatic, showing a sequence of notes in treble clef with a key signature of one flat (B♭).



Musical staff for F Chromatic continuation, showing a sequence of notes in treble clef with a key signature of one flat (B♭).

# OkMEA Scale Sets

## Set 1

B Major



Eb Major



F Chromatic



## Set 2

E Major



Ab Major



F Chromatic



Set 3

A Major



Db Major



F Chromatic



Set 4

D Major



F# Major



F Chromatic



Bass Clarinet

# OkMEA Scale Sets

## Set 1

B Major



Eb Major



F Chromatic



## Set 2

E Major



Ab Major



F Chromatic



Set 3

A Major



Db Major



F Chromatic



Set 4

D Major



F# Major



F Chromatic



# OkMEA Scale Sets

## Set 1

F# Major



B♭ Major



F Chromatic



## Set 2

B Major



E♭ Major



F Chromatic



Set 3

E Major



Ab Major



F Chromatic



Set 3 consists of four musical staves. The first staff is labeled 'E Major' and shows a scale starting on E4 with a key signature of three sharps (F#, C#, G#). The second staff is labeled 'Ab Major' and shows a scale starting on Ab4 with a key signature of four flats (Bb, Eb, Ab, Db). The third staff is labeled 'F Chromatic' and shows a chromatic scale starting on F4, with notes marked with sharps and flats to indicate the chromatic movement. The fourth staff is an unlabeled chromatic scale starting on F4, also with notes marked with sharps and flats. Each staff concludes with a final note and a fermata.

Set 4

A Major



Db Major



F Chromatic



Set 4 consists of four musical staves. The first staff is labeled 'A Major' and shows a scale starting on A4 with a key signature of three sharps (F#, C#, G#). The second staff is labeled 'Db Major' and shows a scale starting on Db4 with a key signature of five flats (Bb, Eb, Ab, Db, Gb). The third staff is labeled 'F Chromatic' and shows a chromatic scale starting on F4, with notes marked with sharps and flats. The fourth staff is an unlabeled chromatic scale starting on F4, also with notes marked with sharps and flats. Each staff concludes with a final note and a fermata.



# OkMEA Scale Sets

## Set 1

B Major



Eb Major



F Chromatic



## Set 2

E Major



Ab Major



F Chromatic



Set 3

A Major



Db Major



F Chromatic



Set 4

D Major



F# Major



F Chromatic



Alto Saxophone

# OkMEA Scale Sets

## Set 1

F# Major



Bb Major



C Chromatic



## Set 2

B Major



Eb Major



C Chromatic



Alto Saxophone

Set 3

E Major

Musical staff for E Major scale, Set 3. The staff is in treble clef with a key signature of three sharps (F#, C#, G#). The scale is written in a single line, starting on E4 and ending on E5. The notes are: E4, F#4, G4, A4, B4, C#5, D5, E5. The scale is written in a single line, starting on E4 and ending on E5. The notes are: E4, F#4, G4, A4, B4, C#5, D5, E5.

Ab Major

Musical staff for Ab Major scale, Set 3. The staff is in treble clef with a key signature of two flats (Bb, Eb). The scale is written in a single line, starting on Ab4 and ending on Ab5. The notes are: Ab4, Bb4, C5, Db5, Eb5, F5, G5, Ab5.

C Chromatic

Musical staff for C Chromatic scale, Set 3. The staff is in treble clef with a key signature of one sharp (F#). The scale is written in a single line, starting on C4 and ending on C5. The notes are: C4, C#4, D4, D#4, E4, E#4, F4, F#4, G4, G#4, A4, A#4, B4, B#4, C5.

Musical staff for C Chromatic scale, Set 3 (continued). The staff is in treble clef with a key signature of one flat (Bb). The scale is written in a single line, starting on C4 and ending on C5. The notes are: C4, Cb4, B4, Bb4, Ab4, Ab5, Bb5, B4, Bb4, A4, Ab4, G4, Gb4, F4, Fb4, E4, Eb4, D4, Db4, C5.

Set 4

A Major

Musical staff for A Major scale, Set 4. The staff is in treble clef with a key signature of three sharps (F#, C#, G#). The scale is written in a single line, starting on A4 and ending on A5. The notes are: A4, B4, C#5, D5, E5, F#5, G#5, A5.

Db Major

Musical staff for Db Major scale, Set 4. The staff is in treble clef with a key signature of four flats (Bbb, Ebb, Abb, Dbb). The scale is written in a single line, starting on Db4 and ending on Db5. The notes are: Db4, Ebb4, Fbb4, Gbb4, Ab5, Bbb5, Cbb5, Db5.

C Chromatic

Musical staff for C Chromatic scale, Set 4. The staff is in treble clef with a key signature of one sharp (F#). The scale is written in a single line, starting on C4 and ending on C5. The notes are: C4, C#4, D4, D#4, E4, E#4, F4, F#4, G4, G#4, A4, A#4, B4, B#4, C5.

Musical staff for C Chromatic scale, Set 4 (continued). The staff is in treble clef with a key signature of one flat (Bb). The scale is written in a single line, starting on C4 and ending on C5. The notes are: C4, Cb4, B4, Bb4, Ab4, Ab5, Bb5, B4, Bb4, A4, Ab4, G4, Gb4, F4, Fb4, E4, Eb4, D4, Db4, C5.

Tenor Saxophone

# OkMEA Scale Sets

## Set 1

B Major



Eb Major



C Chromatic



## Set 2

E Major



Ab Major



C Chromatic



Set 3

A Major



Db Major



C Chromatic



Set 4

D Major



F# Major



C Chromatic



Bari Saxophone

# OkMEA Scale Sets

## Set 1

F# Major



Bb Major



C Chromatic



## Set 2

B Major



Eb Major



C Chromatic



Set 3

E Major



Musical staff for E Major scale, Set 3. The staff is in treble clef with a key signature of three sharps (F#, C#, G#). The scale is written as a sequence of eighth notes: E4, F#4, G4, A4, B4, C#5, D5, E5, D5, C#5, B4, A4, G4, F#4, E4. The piece concludes with a quarter rest followed by a double bar line.

Ab Major



Musical staff for Ab Major scale, Set 3. The staff is in treble clef with a key signature of two flats (Bb, Eb). The scale is written as a sequence of eighth notes: Ab4, Bb4, C5, D5, Eb5, F5, G5, Ab5, G5, F5, Eb5, D5, C5, Bb4, Ab4. The piece concludes with a quarter rest followed by a double bar line.

C Chromatic



Musical staff for C Chromatic scale, Set 3. The staff is in treble clef with a key signature of one sharp (F#). The scale is written as a sequence of eighth notes: C4, C#4, D4, D#4, E4, E#4, F4, F#4, G4, G#4, A4, A#4, B4, B#4, C5. The piece concludes with a quarter rest followed by a double bar line.



Musical staff for C Chromatic scale, Set 3 (continued). The staff is in treble clef with a key signature of one flat (Bb). The scale is written as a sequence of eighth notes: C4, Cb4, B4, Bb4, Ab4, Ab5, G4, Gb4, F4, Fb4, E4, Eb4, D4, Db4, C4. The piece concludes with a quarter rest followed by a double bar line.

Set 4

A Major



Musical staff for A Major scale, Set 4. The staff is in treble clef with a key signature of three sharps (F#, C#, G#). The scale is written as a sequence of eighth notes: A4, B4, C#5, D5, E5, F#5, G#5, A5, G#5, F#5, E5, D5, C#5, B4, A4. The piece concludes with a quarter rest followed by a double bar line.

Db Major



Musical staff for Db Major scale, Set 4. The staff is in treble clef with a key signature of four flats (Bbb, Ebb, Abb, Dbb). The scale is written as a sequence of eighth notes: Db4, Eb4, F4, G4, Ab4, Bb4, C5, Db5, C5, Bb4, Ab4, G4, F4, Eb4, Db4. The piece concludes with a quarter rest followed by a double bar line.

C Chromatic



Musical staff for C Chromatic scale, Set 4. The staff is in treble clef with a key signature of one sharp (F#). The scale is written as a sequence of eighth notes: C4, C#4, D4, D#4, E4, E#4, F4, F#4, G4, G#4, A4, A#4, B4, B#4, C5. The piece concludes with a quarter rest followed by a double bar line.



Musical staff for C Chromatic scale, Set 4 (continued). The staff is in treble clef with a key signature of one flat (Bb). The scale is written as a sequence of eighth notes: C4, Cb4, B4, Bb4, Ab4, Ab5, G4, Gb4, F4, Fb4, E4, Eb4, D4, Db4, C4. The piece concludes with a quarter rest followed by a double bar line.



Trumpet

# OkMEA Scale Sets

## Set 1

B Major



Eb Major



C Chromatic



## Set 2

E Major



Ab Major



C Chromatic



Trumpet

Set 3

A Major



Db Major



C Chromatic



Set 4

D Major



F# Major



C Chromatic



Horn in F

# OkMEA Scale Sets

## Set 1

E Major



Ab Major



F Chromatic



## Set 2

A Major



Db Major



F Chromatic



Set 3

D Major



F# Major



F Chromatic

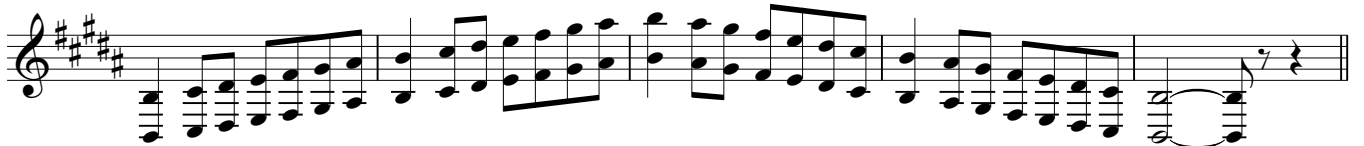


Set 4

G Major



B Major



F Chromatic



Trombone

# OkMEA Scale Sets

## Set 1

A Major



Db Major



Bb Chromatic



## Set 2

D Major



Gb Major



Bb Chromatic



Trombone

Set 3

G Major

First staff of music for Set 3, G Major. The key signature has one sharp (F#). The melody starts on G2 and ascends stepwise to G4, then descends to G3, ending with a quarter rest.

B Major

Second staff of music for Set 3, B Major. The key signature has two sharps (F# and C#). The melody starts on B2 and ascends stepwise to B4, then descends to B3, ending with a quarter rest.

Bb Chromatic

Third and fourth staves of music for Set 3, Bb Chromatic. The key signature has two flats (Bb and Eb). The third staff shows a chromatic ascent from Bb2 to Bb4. The fourth staff shows a chromatic descent from Bb4 to Bb2, ending with a quarter rest.

Set 4

C Major

First staff of music for Set 4, C Major. The key signature has no sharps or flats. The melody starts on C2 and ascends stepwise to C4, then descends to C3, ending with a quarter rest.

E Major

Second staff of music for Set 4, E Major. The key signature has four sharps (F#, C#, G#, and D#). The melody starts on E2 and ascends stepwise to E4, then descends to E3, ending with a quarter rest.

Bb Chromatic

Third and fourth staves of music for Set 4, Bb Chromatic. The key signature has two flats (Bb and Eb). The third staff shows a chromatic ascent from Bb2 to Bb4. The fourth staff shows a chromatic descent from Bb4 to Bb2, ending with a quarter rest.

# OkMEA Scale Sets

## Set 1

A Major



Db Major



Bb Chromatic



## Set 2

D Major



Gb Major



Bb Chromatic



Set 3

G Major

First staff of Set 3, G Major. Bass clef, one sharp (F#). The scale consists of eight eighth notes: G2, A2, B2, C3, D3, E3, F#3, G3. The final note is followed by a quarter rest and a double bar line.

B Major

Second staff of Set 3, B Major. Bass clef, two sharps (F#, C#). The scale consists of eight eighth notes: B2, C#3, D3, E3, F#3, G#3, A3, B3. The final note is followed by a quarter rest and a double bar line.

Bb Chromatic

Third and fourth staves of Set 3, Bb Chromatic. Bass clef, two flats (Bb, Eb). The scale consists of 12 eighth notes: Bb2, B2, B#2, C3, C#3, Cb3, C3, C#3, Cb3, C3, C#3, Cb3. The final note is followed by a quarter rest and a double bar line.

Set 4

C Major

First staff of Set 4, C Major. Bass clef, no sharps or flats. The scale consists of eight eighth notes: C2, D2, E2, F2, G2, A2, B2, C3. The final note is followed by a quarter rest and a double bar line.

E Major

Second staff of Set 4, E Major. Bass clef, four sharps (F#, C#, G#, D#). The scale consists of eight eighth notes: E2, F#2, G#2, A2, B2, C#3, D#3, E3. The final note is followed by a quarter rest and a double bar line.

Bb Chromatic

Third and fourth staves of Set 4, Bb Chromatic. Bass clef, two flats (Bb, Eb). The scale consists of 12 eighth notes: Bb2, B2, B#2, C3, C#3, Cb3, C3, C#3, Cb3, C3, C#3, Cb3. The final note is followed by a quarter rest and a double bar line.



Euphonium T.C.

# OkMEA Scale Sets

## Set 1

B Major



Eb Major



C Chromatic



## Set 2

E Major



Ab Major



C Chromatic



Euphonium T.C.

Set 3

A Major



Musical notation for the A Major scale, starting on A4 and ending on A5. The scale is written in treble clef with a key signature of two sharps (F# and C#). The notes are: A4, B4, C#5, D5, E5, F#5, G5, A5. The notation includes a final quarter rest and a repeat sign.

Db Major



Musical notation for the Db Major scale, starting on D4 and ending on D5. The scale is written in treble clef with a key signature of five flats (Bb, Eb, Ab, Db, Gb). The notes are: D4, E4, F4, G4, Ab4, Bb4, C5, D5. The notation includes a final quarter rest and a repeat sign.

C Chromatic



Musical notation for the C Chromatic scale, starting on C4 and ending on C5. The scale is written in treble clef with a key signature of no sharps or flats. The notes are: C4, C#4, D4, D#4, E4, E#4, F4, F#4, G4, G#4, A4, A#4, B4, B#4, C5. The notation includes a final quarter rest and a repeat sign.



Musical notation for the C Chromatic scale, starting on C4 and ending on C5. The scale is written in treble clef with a key signature of no sharps or flats. The notes are: C4, Cb4, B4, Bb4, Ab4, G4, Gb4, F4, Fb4, E4, Eb4, D4, Db4, C5. The notation includes a final quarter rest and a repeat sign.

Set 4

D Major



Musical notation for the D Major scale, starting on D4 and ending on D5. The scale is written in treble clef with a key signature of two sharps (F# and C#). The notes are: D4, E4, F#4, G4, A4, B4, C#5, D5. The notation includes a final quarter rest and a repeat sign.

F# Major



Musical notation for the F# Major scale, starting on F#4 and ending on F#5. The scale is written in treble clef with a key signature of three sharps (F#, C#, G#). The notes are: F#4, G#4, A4, B4, C#5, D5, E5, F#5. The notation includes a final quarter rest and a repeat sign.

C Chromatic



Musical notation for the C Chromatic scale, starting on C4 and ending on C5. The scale is written in treble clef with a key signature of no sharps or flats. The notes are: C4, C#4, D4, D#4, E4, E#4, F4, F#4, G4, G#4, A4, A#4, B4, B#4, C5. The notation includes a final quarter rest and a repeat sign.



Musical notation for the C Chromatic scale, starting on C4 and ending on C5. The scale is written in treble clef with a key signature of no sharps or flats. The notes are: C4, Cb4, B4, Bb4, Ab4, G4, Gb4, F4, Fb4, E4, Eb4, D4, Db4, C5. The notation includes a final quarter rest and a repeat sign.

Tuba

# OkMEA Scale Sets

## Set 1

A Major



Musical notation for the A Major scale in bass clef. The scale starts on A2 and ends on A3. The notes are A, B, C, D, E, F#, G#, A, B, C, D, E, F#, G#, A. The notation includes a key signature of two sharps (F# and C#) and a final fermata on the A note.

Db Major



Musical notation for the Db Major scale in bass clef. The scale starts on Db2 and ends on Db3. The notes are Db, Eb, F, G, Ab, Bb, C, Db, Eb, F, G, Ab, Bb, C, Db. The notation includes a key signature of three flats (Bb, Eb, and Ab) and a final fermata on the Db note.

Bb Chromatic



Musical notation for the Bb Chromatic scale in bass clef. The scale starts on Bb2 and ends on Bb3. The notes are Bb, B, Cb, C, Db, D, Eb, E, Fb, F, Gb, G, Ab, A, Bb. The notation includes a key signature of two flats (Bb and Eb) and a final fermata on the Bb note.

## Set 2

D Major



Musical notation for the D Major scale in bass clef. The scale starts on D2 and ends on D3. The notes are D, E, F#, G, A, B, C#, D, E, F#, G, A, B, C#, D. The notation includes a key signature of two sharps (F# and C#) and a final fermata on the D note.

Gb Major



Musical notation for the Gb Major scale in bass clef. The scale starts on Gb2 and ends on Gb3. The notes are Gb, Ab, Bb, C, Db, Eb, F, Gb, Ab, Bb, C, Db, Eb, F, Gb. The notation includes a key signature of three flats (Bb, Eb, and Ab) and a final fermata on the Gb note.

Bb Chromatic



Musical notation for the Bb Chromatic scale in bass clef. The scale starts on Bb2 and ends on Bb3. The notes are Bb, B, Cb, C, Db, D, Eb, E, Fb, F, Gb, G, Ab, A, Bb. The notation includes a key signature of two flats (Bb and Eb) and a final fermata on the Bb note.

Tuba

Set 3

G Major

Musical notation for G Major in bass clef. The key signature has one sharp (F#). The melody consists of a series of eighth notes: G2, A2, B2, C3, D3, E3, F#3, G3, A3, B3, C4, D4, E4, F#4, G4, followed by a quarter rest and a final G4.

B Major

Musical notation for B Major in bass clef. The key signature has two sharps (F# and C#). The melody consists of a series of eighth notes: B1, C#2, D2, E2, F#2, G2, A2, B2, C#3, D3, E3, F#3, G3, A3, B3, followed by a quarter rest and a final B3.

Bb Chromatic

Musical notation for Bb Chromatic in bass clef. The key signature has two sharps (F# and C#). The melody consists of a series of eighth notes: Bb1, C#2, D2, E2, F#2, G2, A2, Bb2, C#3, D3, E3, F#3, G3, Ab3, Bb3, followed by a quarter rest and a final Bb3.

Musical notation for Bb Chromatic in bass clef. The key signature has two flats (Bb and Eb). The melody consists of a series of eighth notes: Bb1, Cb2, D2, Eb2, F2, G2, Ab2, Bb2, Cb3, Db3, Eb3, F3, G3, Ab3, Bb3, followed by a quarter rest and a final Bb3.

Set 4

C Major

Musical notation for C Major in bass clef. The key signature has no sharps or flats. The melody consists of a series of eighth notes: C2, D2, E2, F2, G2, A2, B2, C3, D3, E3, F3, G3, A3, B3, C4, followed by a quarter rest and a final C4.

E Major

Musical notation for E Major in bass clef. The key signature has three sharps (F#, C#, G#). The melody consists of a series of eighth notes: E1, F#2, G#2, A2, B2, C#3, D#3, E3, F#4, G#4, A4, B4, C#5, D#5, E5, followed by a quarter rest and a final E5.

Bb Chromatic

Musical notation for Bb Chromatic in bass clef. The key signature has two sharps (F# and C#). The melody consists of a series of eighth notes: Bb1, C#2, D2, E2, F#2, G2, A2, Bb2, C#3, D3, E3, F#3, G3, Ab3, Bb3, followed by a quarter rest and a final Bb3.

Musical notation for Bb Chromatic in bass clef. The key signature has two flats (Bb and Eb). The melody consists of a series of eighth notes: Bb1, Cb2, D2, Eb2, F2, G2, Ab2, Bb2, Cb3, Db3, Eb3, F3, G3, Ab3, Bb3, followed by a quarter rest and a final Bb3.